

N22-5F Laboratory



澳門大學
UNIVERSIDADE DE MACAU
UNIVERSITY OF MACAU

Contact

- Laboratory Technician Office: **5F – 5030**

- Office hour:

Morning: 9:00 – 13:00

Afternoon: 14:30 – 17:45 (Mon to Thur)

14:30 – 17:30 (Fri)



澳門大學
UNIVERSIDADE DE MACAU
UNIVERSITY OF MACAU

GENERAL SAFETY OF 5F LAB

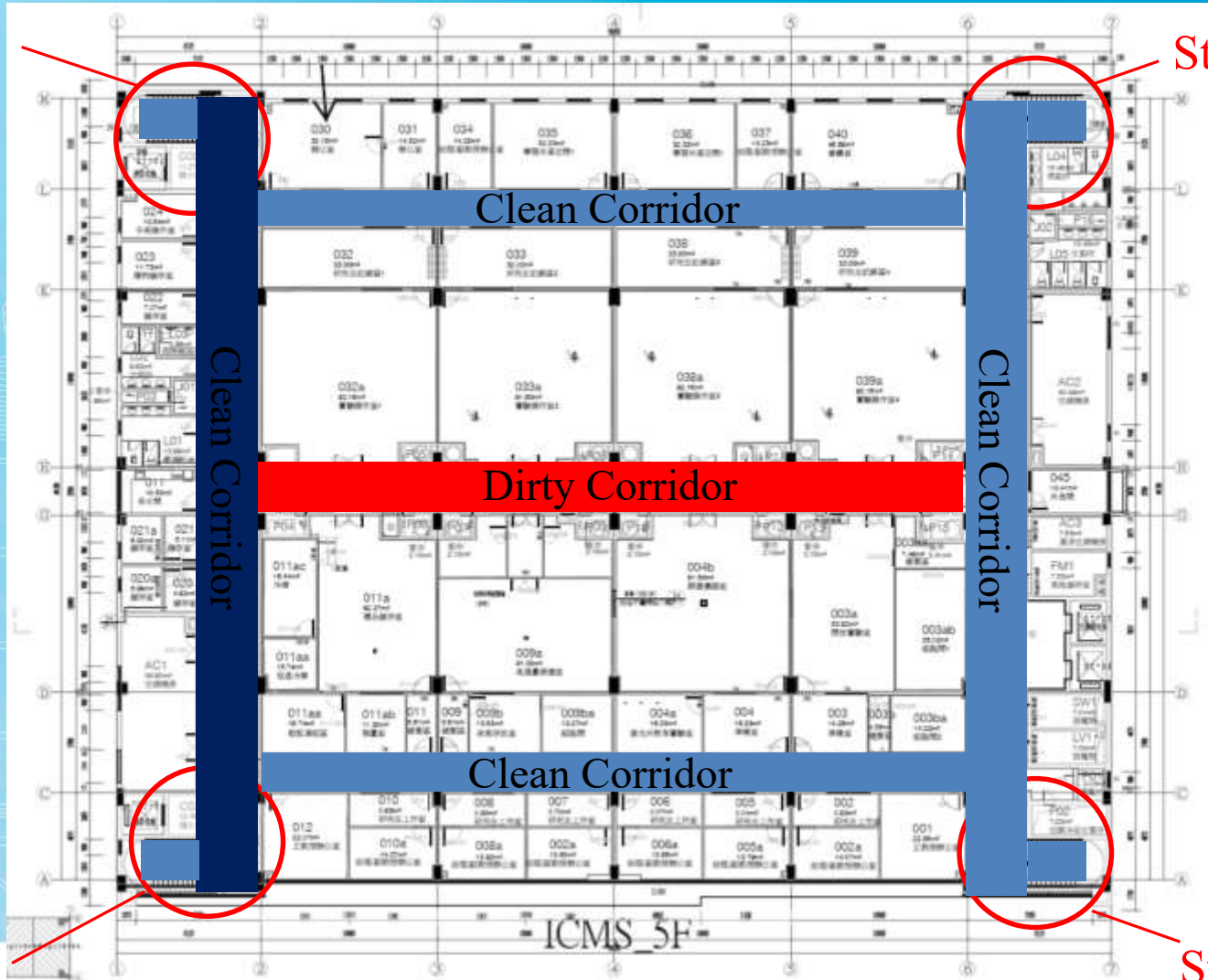


澳門大學
UNIVERSIDADE DE MACAU
UNIVERSITY OF MACAU

Evacuation Route

Stair

Stair



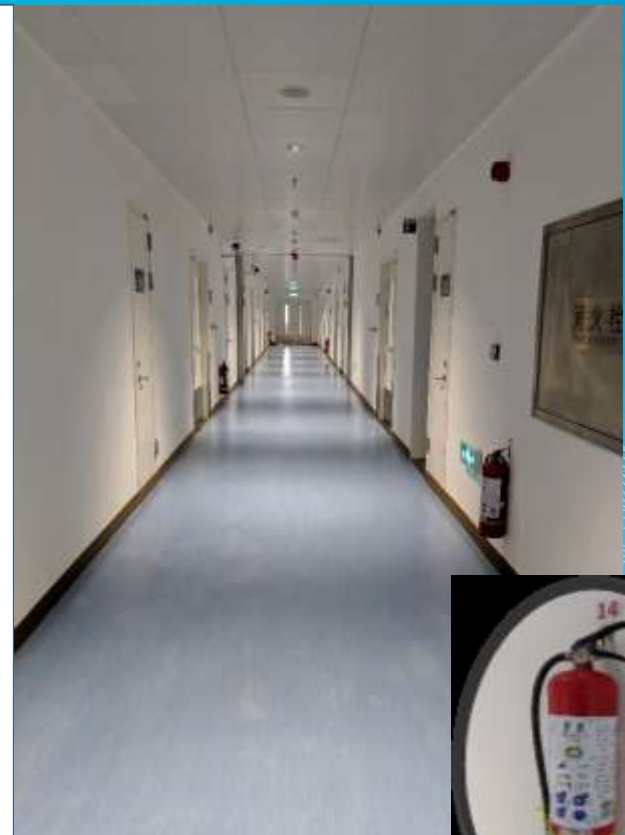
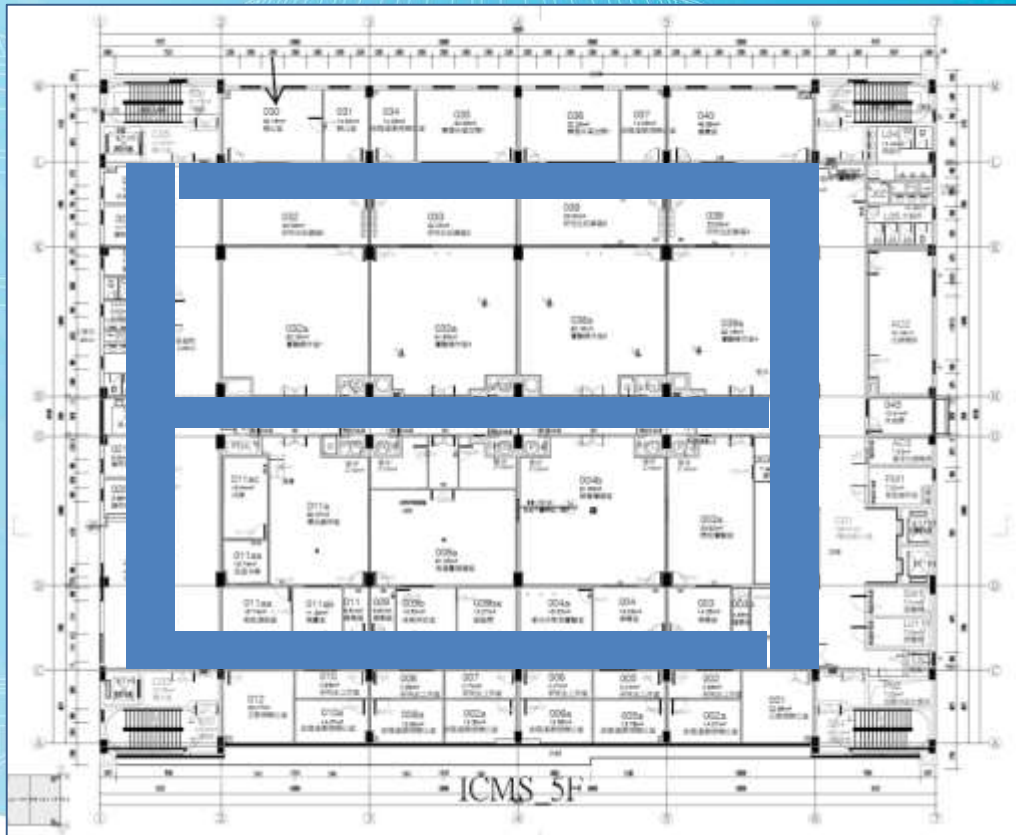
Stair

Stair



Fire Extinguisher

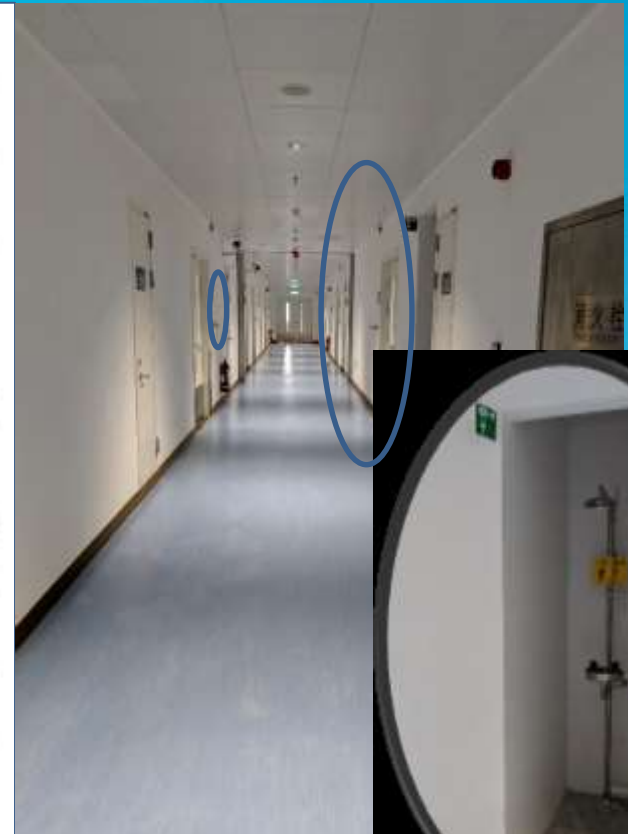
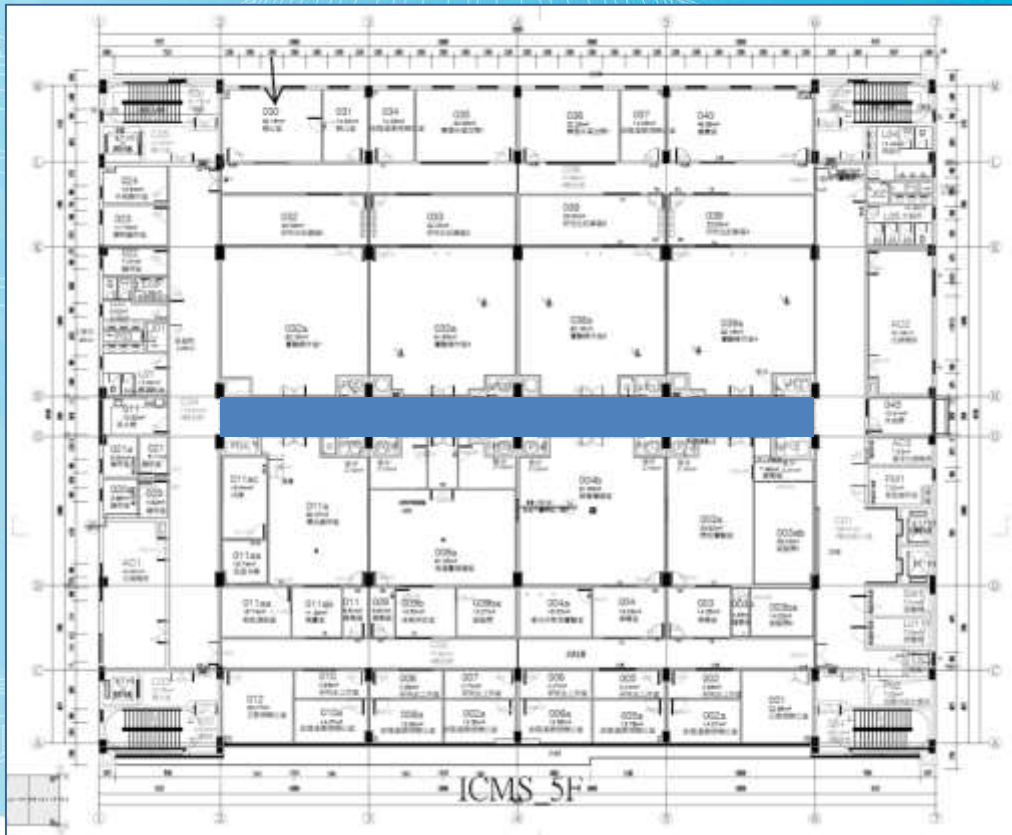
- Located in every main corridor.



UNIVERSITY OF SYDNEY
UNIVERSITY OF SYDNEY

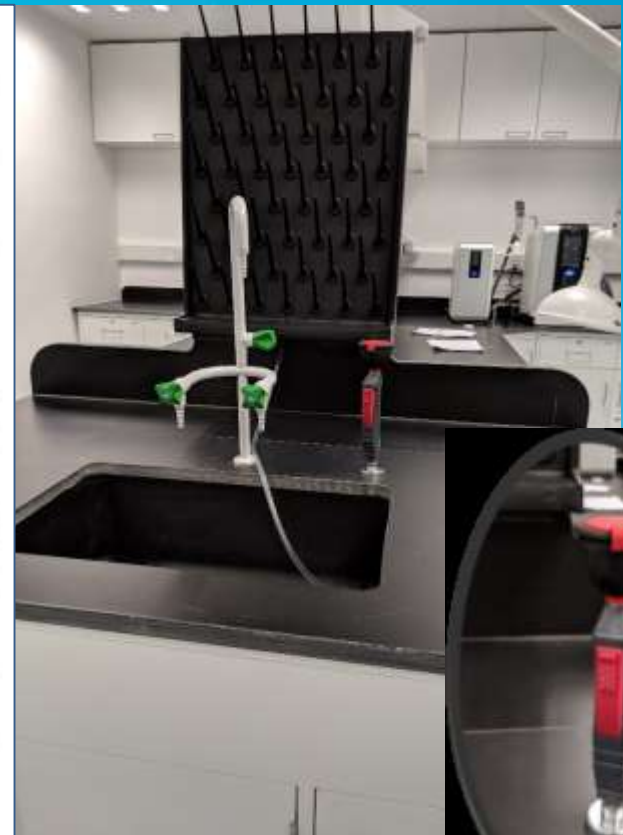
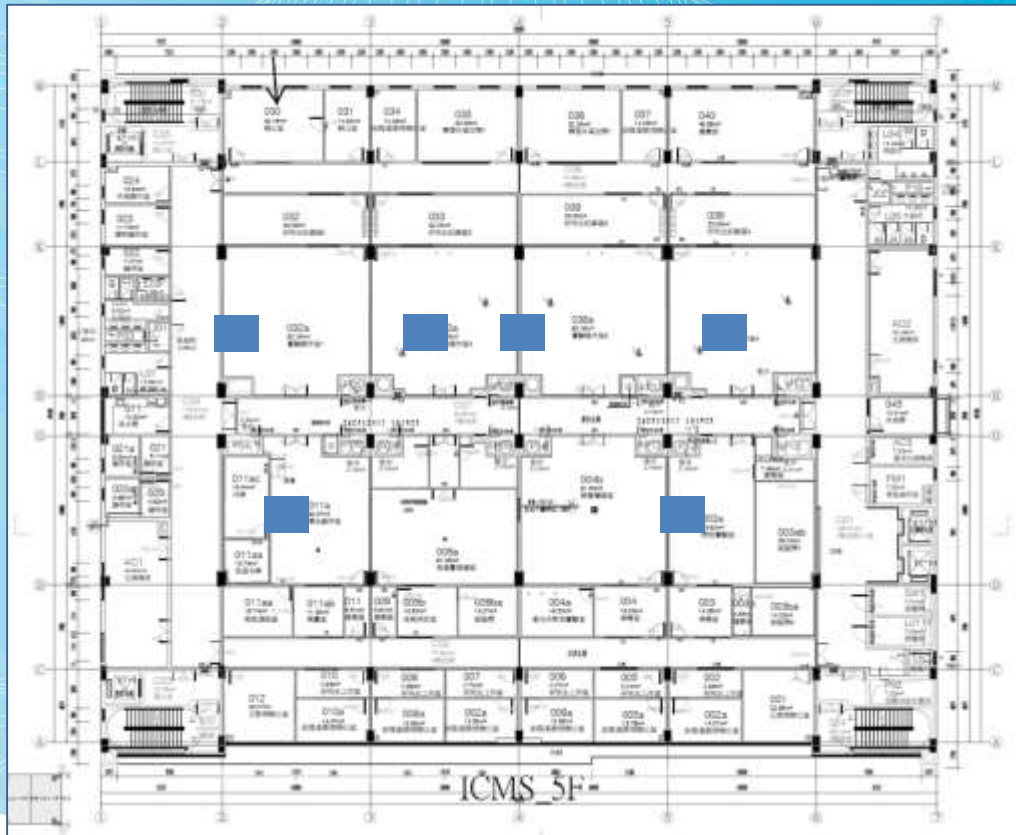
Emergency Shower

- Two sets of emergency showers are located in the dirty corridor.



Eye Washer

- Located in each General Laboratory, 5003a and 5011a.



UNIVERSITY OF
NEW SOUTH WALES

Emergency Button

When you press the button:

- Room pressure will become more **Negative** (The exhaust keep working, but the air inlet stop);
- Audio and Visible Alarm;
- Emergency signal will send to security centre of the University.



澳門大學
UNIVERSIDADE DE MACAU
UNIVERSITY OF MACAU

SPECIALIZED ROOMS IN 5F LAB



澳門大學
UNIVERSIDADE DE MACAU
UNIVERSITY OF MACAU

Culture Room

- Cell Culture Room 1 (5003ab)
- Cell Culture Room 2 (5003ba)
- Cell Culture Room 3 (5009ba)
- Bacteria Culture Room (5009aa)



UV Germicidal Lamp



Indicator
(Red)



Button



UV Germicidal Lamp

Importance notice:

- Exposure to UV germicidal lamps can **cause eye damage and skin burns** from very short exposures (~15 seconds);
- Before entering the room, please **CHECK and MAKE SURE** the UV germicidal lamp and the indicator are off;
- Before switching on the UV germicidal lamp, please **CHECK and MAKE SURE** there is no body in the room.



Indicator
(Red)



Button



UV Germicidal Lamp

Cell Culture Room 1 (5003ab)

When the UV germicidal lamp is turned on:

- 60-minute UV sterilization process;
- Automatic doors will be locked.

If you are accidentally locked in the room:

- Break the emergency glass;
- Manually slide and open the door.



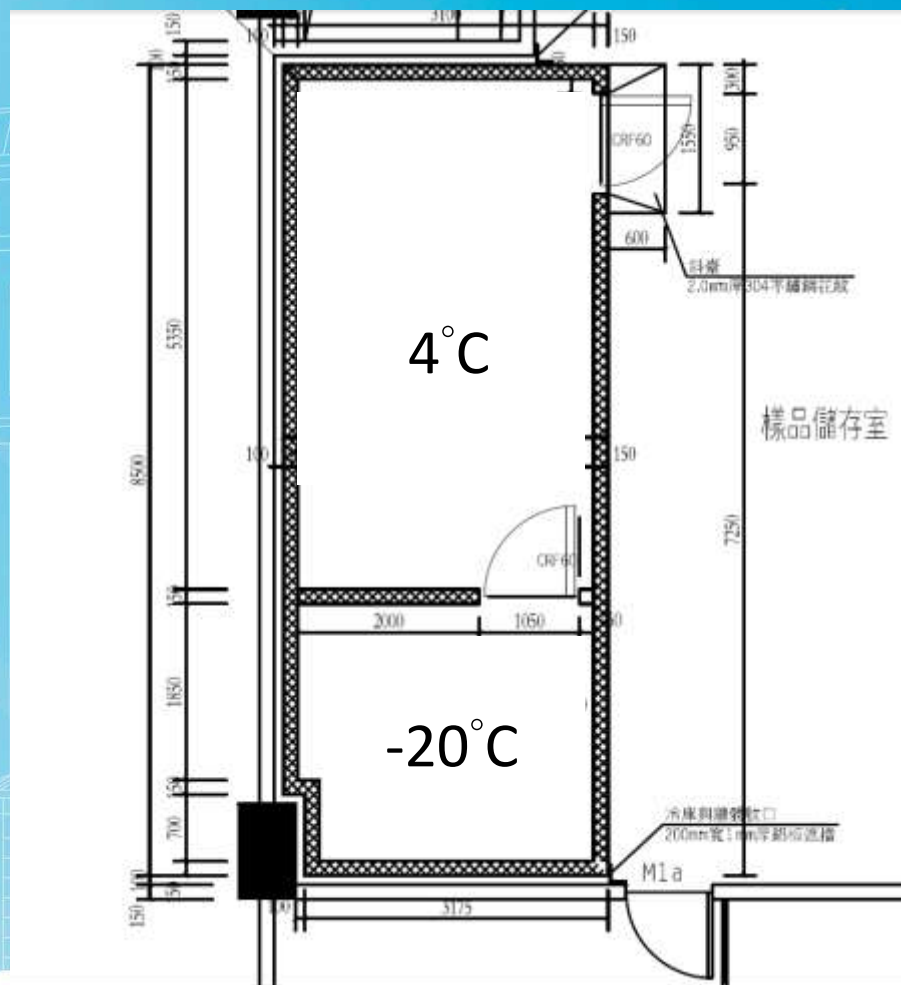
Cell Culture Room1

**Please read the UV Germicidal Lamp Guideline of
Cell Culture Room 1 (5003ab) carefully**



澳門大學
UNIVERSIDADE DE MACAU
UNIVERSITY OF MACAU

Cold Room (5011ac & 5011ad)



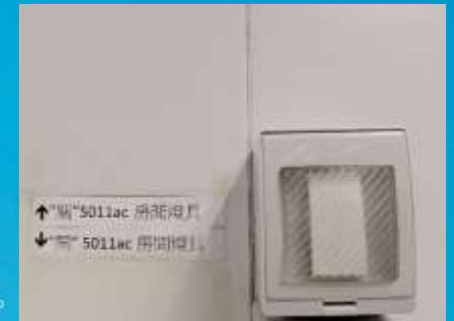
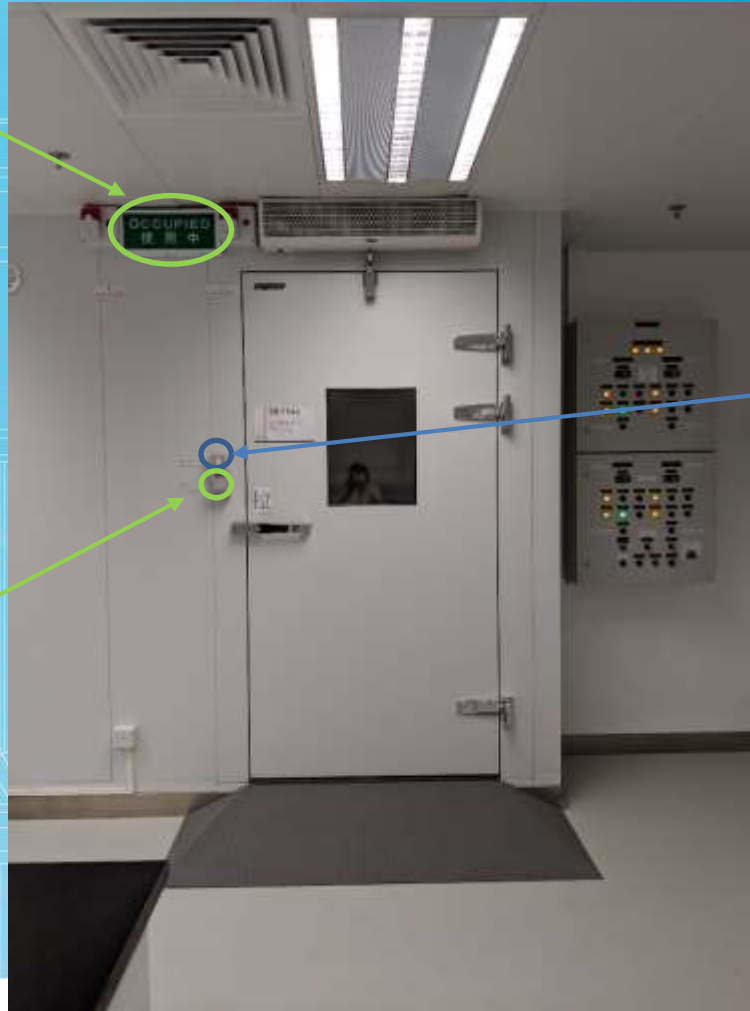
Cold Room



“Occupied” indicator



Switch for “Occupied” indicator



Light switch



Cold Room

Inside the cold room



Emergency Button



To unlock the door
(In case you are
mistakenly locked)



澳門大學
UNIVERSIDADE DE MACAU
UNIVERSITY OF MACAU

Animal Operation Room (5025)

Animal Behavior Analysis System



澳門大學
UNIVERSIDADE DE MACAU
UNIVERSITY OF MACAU

Animal Operation Room

- Manage according to the ICMS Animal Room Regulation.

**Do Not Leave Animal
Unattended in the Room!**



澳門大學
UNIVERSIDADE DE MACAU
UNIVERSITY OF MACAU

EQUIPMENT OVERVIEW OF 5F LAB



澳門大學
UNIVERSIDADE DE MACAU
UNIVERSITY OF MACAU

Imaging and Microscopic Systems



澳門大學
UNIVERSIDADE DE MACAU
UNIVERSITY OF MACAU

Cell Analysis Systems



澳門大學
UNIVERSIDADE DE MACAU
UNIVERSITY OF MACAU

Biochemical and Molecular Biology Devices



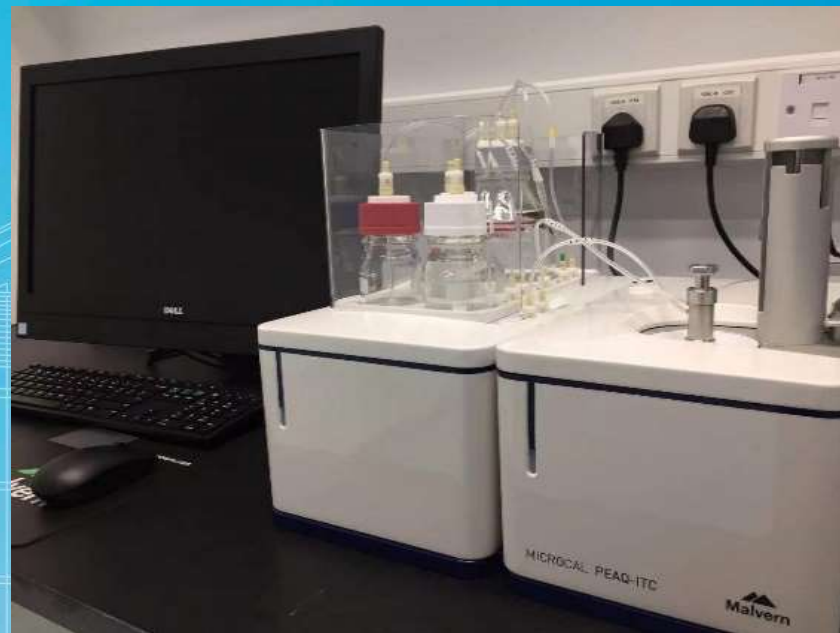
澳門大學
UNIVERSIDADE DE MACAU
UNIVERSITY OF MACAU

High-Content Screening System



澳門大學
UNIVERSIDADE DE MACAU
UNIVERSITY OF MACAU

Protein Analysis System



澳門大學
UNIVERSIDADE DE MACAU
UNIVERSITY OF MACAU

Before Use...

- Training (and assessment) is required for some precise equipment.
- Mind the reservation method:
 - Reservation on **LIMS**;
 - Reservation at **Lab Tech Office**;
 - No Reservation is needed.



Training of 5F Equipment

- Depends on the complexity of the operation, training is required for some equipment;
- 5F lab will organize centralized training in October and November;
- Details of the training will be sent by email in later time.

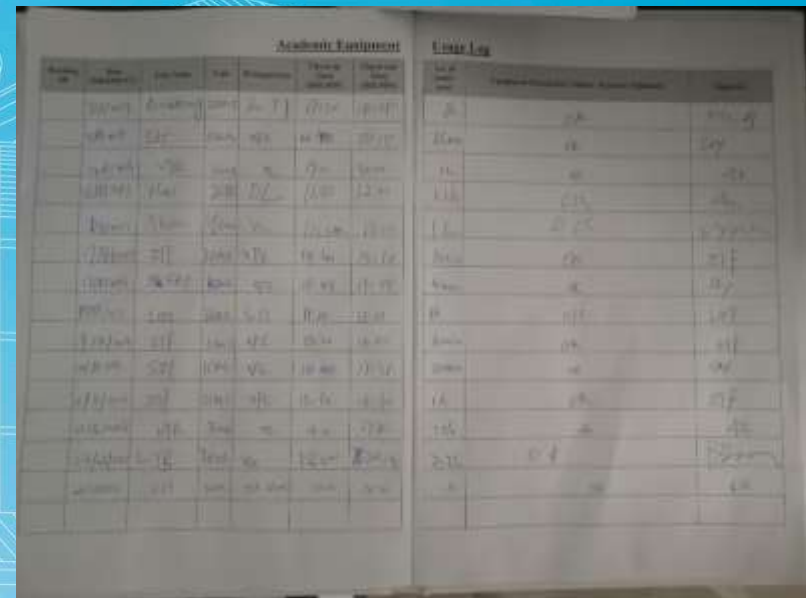


After Use...

- According to the University regulation, record your usage on the **Equipment Log Book**.



The image shows the front cover of the 'Academic Equipment Log Book'. It features the University of Macau logo at the top left. The title 'Academic Equipment Log Book' is prominently displayed in the center. Below the title, there is a form with several fields for recording equipment details: 'Serial', 'Name of Equipment', 'Brand and Model', 'UM Asset Number', 'Person-in-Charge', 'Location', 'Initial Usage Date', 'Initial Training Date', and 'Other Remarks'.



The image shows an open 'Academic Equipment Log Book'. The left page is titled 'Academic Equipment' and contains a table with columns for 'Equipment ID', 'Name', 'Brand', 'Model', 'Serial', 'Location', 'Initial Usage Date', and 'Initial Training Date'. The right page is titled 'Usage Log' and contains a table with columns for 'Date', 'Person-in-Charge', 'Equipment ID', 'Initial Usage Date', and 'Initial Training Date'. Both pages have handwritten entries.



Thank You!



澳門大學
UNIVERSIDADE DE MACAU
UNIVERSITY OF MACAU